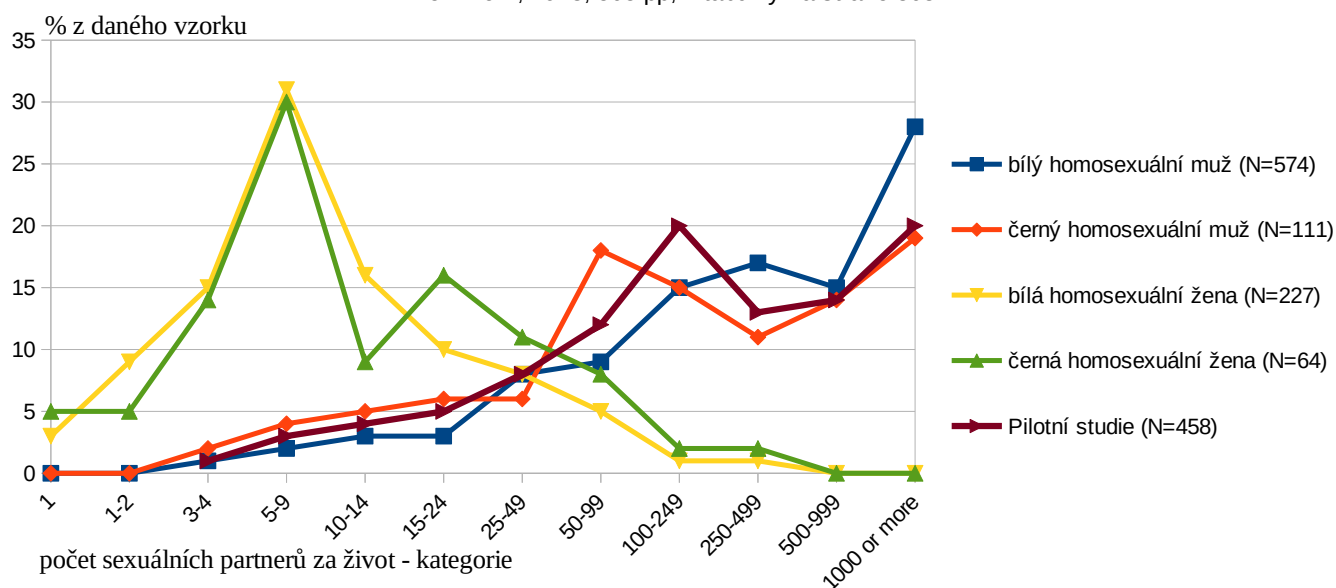


Počet partnerů za život u homosexuálů

Alan P. Bell, Ph.D., and Martin S. Weinberg, Ph.D.: Homosexualities:
A Study of Diversity Among Men & Women. Simon and Schuster,
New York, 1978, 505 pp, z tabulky na straně 308



Životní styl mužských a ženských homosexuálů je dramaticky odlišný. Vrchol křivky je modus.

Distribuční křivky

str. 308	bílý homosexuální muž (N=574)	černý homosexuální muž (N=111)	bílá homosexuální žena (N=227)	černá homosexuální žena (N=64)	Pilotní studie (N=458)
1	0	0	3	5	
1-2	0	0	9	5	
3-4	1	2	15	14	1
5-9	2	4	31	30	3
10-14	3	5	16	9	4
15-24	3	6	10	16	5
25-49	8	6	8	11	8
50-99	9	18	5	8	12
100-249	15	15	1	2	20
250-499	17	11	1	2	13
500-999	15	14	0	0	14
1000 or more	28	19	0	0	20

Kumulativní křivky

	bílý homosexuální muž (N=574)	černý homosexuální muž (N=111)	bílá homosexuální žena (N=227)	černá homosexuální žena (N=64)	Pilotní studie (N=458)
1	0	0	3	5	0
1-2	0	0	12	10	0
3-4	1	2	27	24	1
5-9	3	6	58	54	4
10-14	6	11	74	63	8
15-24	9	17	84	79	13
25-49	17	23	92	90	21
50-99	26	41	97	98	33
100-249	41	56	98	100	53
250-499	58	67	99	102	66
500-999	73	81	99	102	80
1000 or more	101	100	99	102	100

Mezi tučnými čísly leží 50%

Čísla mimo 100% je chyba ze zaokrouhlení.

Homos

exualities

*A Study of Diversity
Among Men And Women*

Alan P. Bell / Martin S. Weinberg



Simon and Schuster
New York

MHC
HQ
75.16
.46
B45
1978

Copyright © 1978 by Alan P. Bell and Martin S. Weinberg

All rights reserved

including the right of reproduction
in whole or in part in any form

Published by Simon and Schuster

A Division of Gulf & Western Corporation

Simon & Schuster Building

Rockefeller Center

1230 Avenue of the Americas

New York, New York 10020

Designed by Irving Perkins

Manufactured in the United States of America

1 2 3 4 5 6 7 8 9 10

Published in association with Mitchell Beazley Publishers Ltd.

Library of Congress Cataloging in Publication Data

Bell, Alan P., 1932—
Homosexualities.

Report of a study made by the Institute for Sex Research.

Bibliography: p.

Includes index.

1. Homosexuality—United States. I. Weinberg,

Martin S., joint author. II. Indiana. University.

Institute for Sex Research. III. Title.

HQ76.2.U5B45 301.41'57'0973 78-7398

ISBN 0-671-24212-1

Moore Multicultural Center
School of Theology
Claremont, CA

TABLE 7 / Sexual Partnerships

	WHM	BHM	WHF	BHF	Pilot Study
Number of Homosexual Partners Ever	(N=574)	(N=111)	(N=227)	(N=64)	(N=458)
0: 1	0%	0%	3%	5%	
1: 2	0	0	9	5	
2: 3-4	1	2	15	14	1% ^a
3: 5-9	2	4	31	30	3
4: 10-14	3	5	16	9	4
5: 15-24	3	6	10	16	5
6: 25-49	8	6	8	11	8
7: 50-99	9	18	5	8	12
8: 100-249	15	15	1	2	20
9: 250-499	17	11	1	2	13
10: 500-999	15	14	0	0	14
11: 1000 or more	28	19	0	0	20
	<u>R²</u>	<u>b</u>		<u>R²</u>	<u>b</u>
Demographics	.09		Demographics	.04	
BHM-WHM	.09	-.11	BHF-WHF	.05	.17
Proportion of Opposite Race Partners	(N=574)	(N=111)	(N=227)	(N=64)	
0: None	22%	2%	72%	22%	
1-3: Half or less	78	31	27	48	
4-6: More than half	0	67	1	30	
	<u>R²</u>	<u>b</u>		<u>R²</u>	<u>b</u>
Demographics	.04		Demographics	.01	
BHM-WHM	.61	1.47***	BHF-WHF	.28	.89***
Proportion of Partners Who Were Strangers	(N=574)	(N=111)	(N=225)	(N=64)	(N=458)
0: None	1%	5%	62%	56%	6%
1-3: Half or less	20	43	32	38	26
4-6: More than half	79	51	6	6	68
	<u>R²</u>	<u>b</u>		<u>R²</u>	<u>b</u>
Demographics	.01		Demographics	.02	
BHM-WHM	.05	-.42***	BHF-WHF	.02	-.13